


Intelligent Pet Robot

genibo



 Dongbu Robot

Introducing Genibo-SD

Genibo SD is an upgraded version of the Genibo QD, the first intelligent robot puppy in Korea. Genibo SD is more user friendly, durable, and vastly more intelligent with totally upgraded CPU.

① Robot Puppy Loved by The Whole Family

Our Genibo walks around on its own like a real live puppy. Genibo can understand your voice commands and express its feelings when touched on the back, head, sides, and etc.

♥ Make Genibo your best friend and enjoy the satisfaction from owning your own easy to care pet.

② Robot Puppy with Live Emotions

Genibo can be much more than a real puppy. It can scratch the ground, stand on its head, dance, demonstrate Taekwon do, and exercise. Genibo can express its feeling using its eye emoticon, sound effects, and 1,200 emotional actions.

♥ Genibo is like a real live robot puppy, capable of expressing happiness, pleasure, sadness, surprise, anger, boredom, and drowsiness!

③ Genibo is an Intelligent Puppy that can recognize and seek out its owner.

Genibo can recognize human faces including the owners face using the camera on its nose. As it becomes more friendly with the owner the more happier it will be and seek out and follow the owner more.

♥ Genibo is an intelligent robot puppy with the following emotional characteristics (mood/intelligence/character/intimacy) and also following two desires (exercise and hunger).



Genibo-SD Features



Wi-Fi 802.11 b/g/n



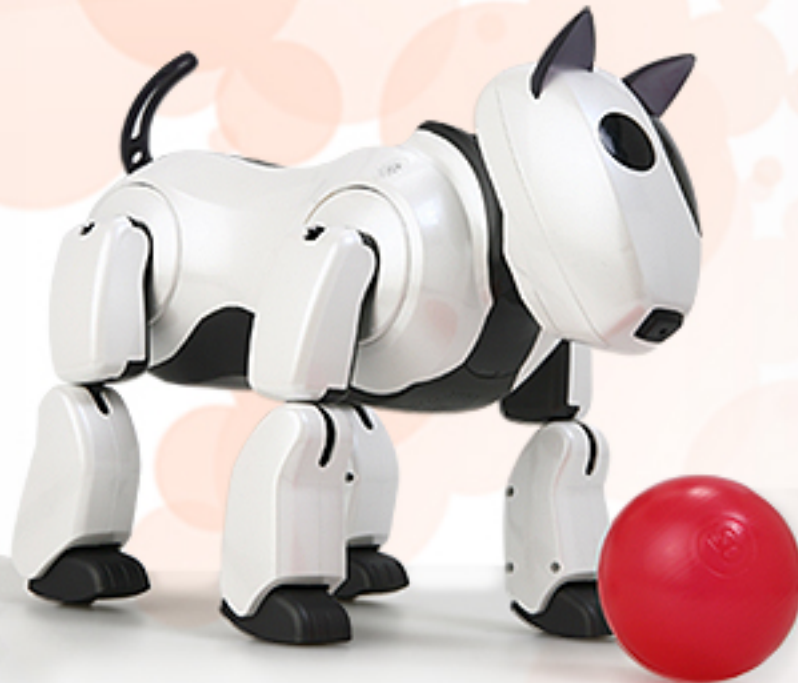
Up to 32GB External SD Memory Card



Recharge Station



2600mAh Li-Ion Battery



10 Channel Touch Sensor



Vision Recognition Voice Recognition



High Sensitive CMOS Camera



Sound Location

Petting vs Hitting

Genibo uses the touch sensors on the head, back, sides, and chin to recognize touches by it's duration. Longer touch or petting makes Genibo happy and short touch makes it angry.

Speech Recognition - 100 words

Genibo is able to understand and follow approximately twenty spoken commands such as "sit", "stand", "down", and their common derivatives for total of approximately one hundred words.

Owner Recognition/ Finding the Ball

Genibo is able to recognize individual faces using the built in camera on its nose. Genibo seeks out and finds red and blue ball.

Avoiding Obstacles

Genibo uses IR sensors to avoid obstacles and cliffs at it's front but Genibo does not have sensors at the back or at the sides. Care should be taken so that Genibo does not fall off the table/stairway when walking backwards or turning.

Safety Gears

Genibo has safety gears to prevent injury when hand or fingers get caught between the joints. Pulling or stretching the legs will not damage the joints but care should be taken not to drop or overload Genibo to prevent damage.

Remote Control

Genibo has safety gears to prevent injury when hand or fingers get caught between the joints. Pulling or stretching the legs will not damage the joints but care should be taken not to drop or overload Genibo to prevent damage.



Genibo-SD Parts & Names



1 Touch Sensor – Head

2 Eye Emoticon LED

3 Touch Sensor – Nose

4 Camera

5 Touch Sensor – Chin

6 Remote Control Receiver Module

7 Distance Sensor

8 Microphone

9 Touch LED – Back

10 Touch Sensor – Back

11 Tail LED

12 Power Switch

13 Touch Sensor – Side

14 Foot Sensor

15 Speaker

16 Main Power Switch

17 Adapter's Connector

18 Air Ventilation Holes